

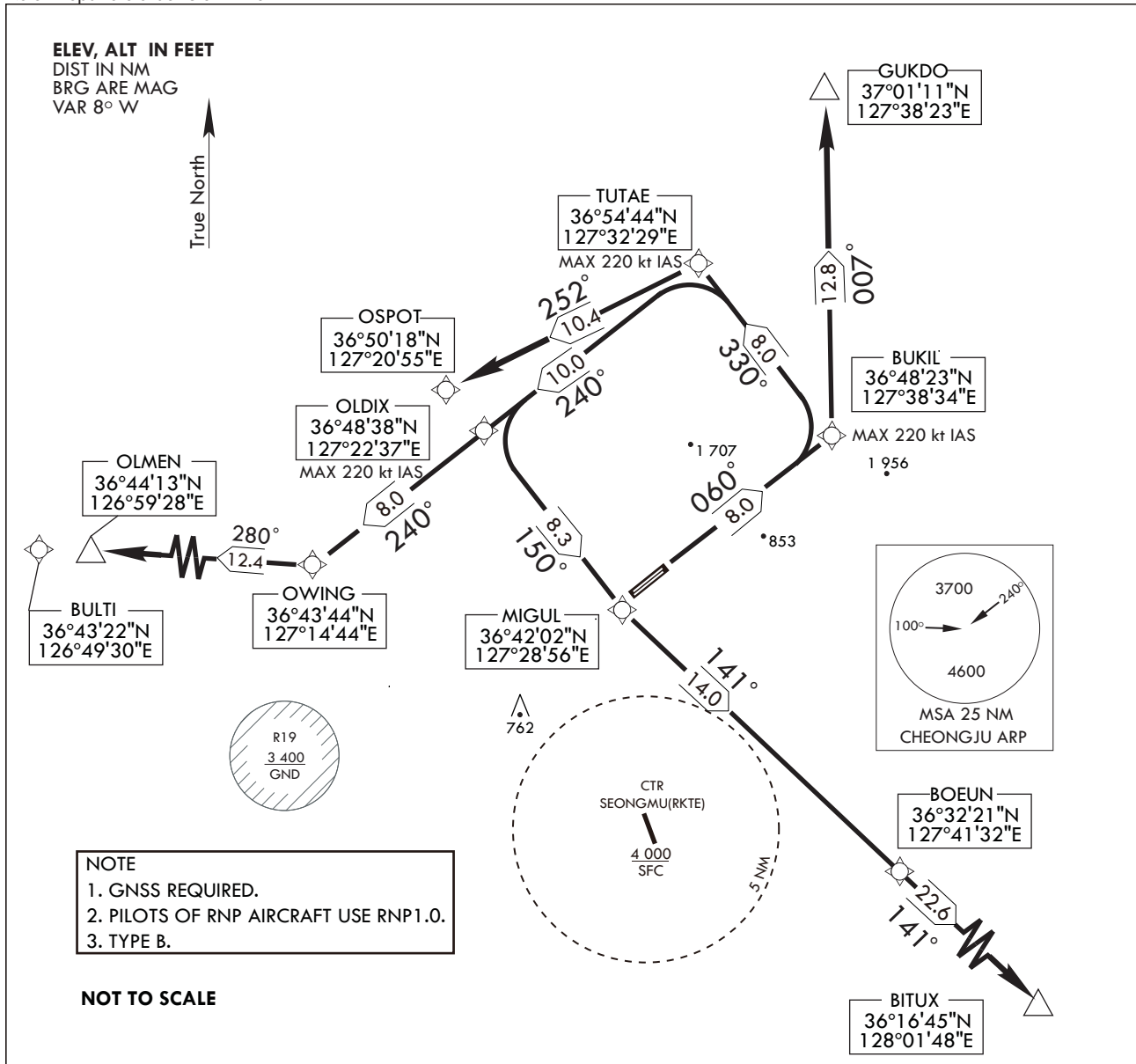
**STANDARD DEPARTURE CHART
INSTRUMENT (SID)**

TRANSITION ALT 14 000
TRANSITION LVL FL 140

JUNGWON DEP 129.65 292.9
CHEONGJU TWR 118.7 249.6
126.2 236.6

CHEONGJU/Cheongju INTL
RWY 6L
RNAV(GNSS)-BUKIL 1

Note : Departure under U.S. TERPS.



Change : Information of fix names(FERRA→OLDIX and PODDE → MIGUL).

INTENTIONALLY

LEFT

BLANK

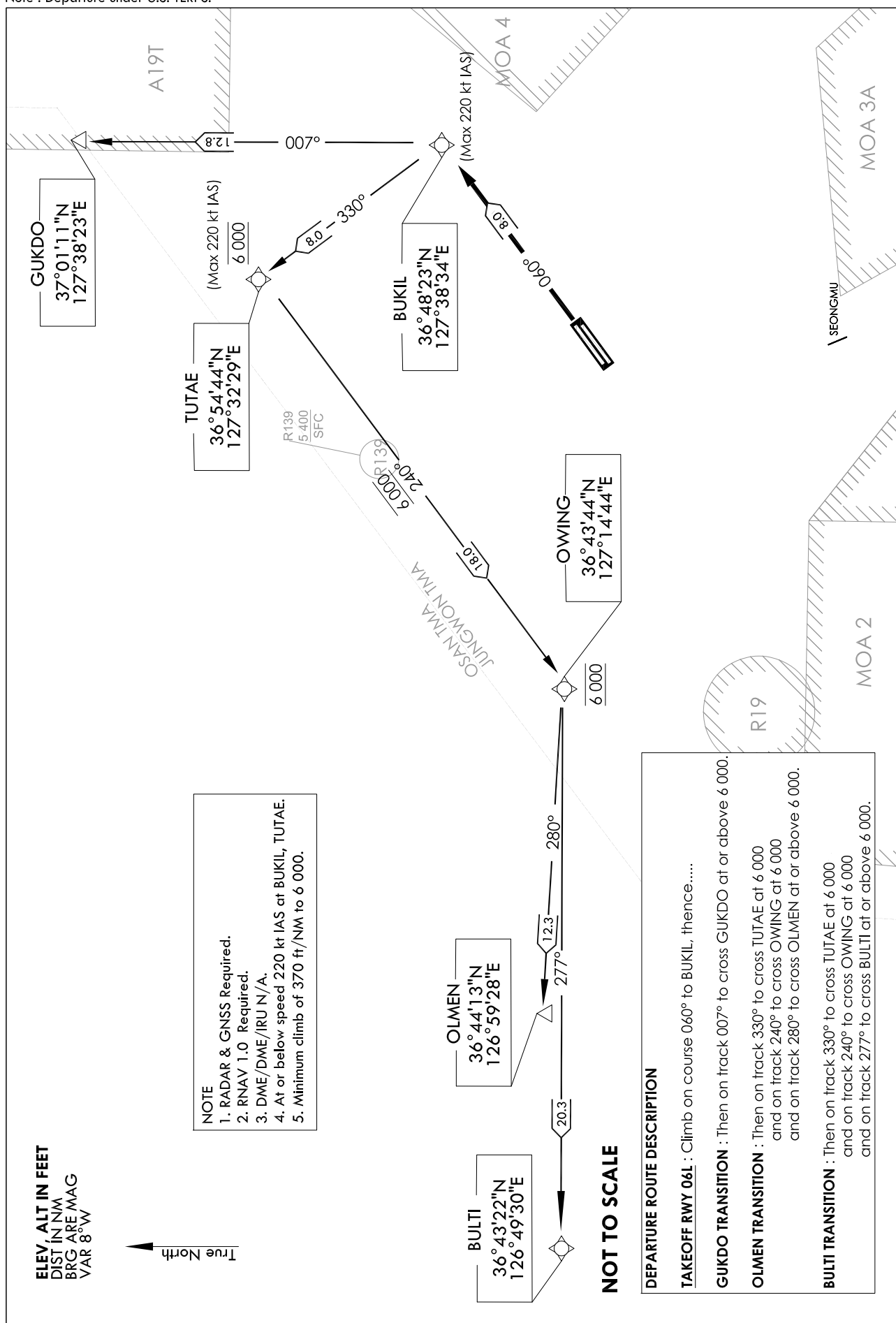
**STANDARD DEPARTURE CHART
INSTRUMENT (SID) - ICAO**

Note : Departure under U.S. TERPS.

TRANSITION ALT 14 000
TRANSITION LVL FL 140

JUNGWON DEP 129.65
CHEONGJU TWR 118.7 126.2

**CHEONGJU/Cheongju INTL
RWY 06L
RNAV(GNSS)-BUKIL 2**



Change : Amended coordinate format.

CHEONGJU/Cheongju INTL(RKTU)
RWY 06L
RNAV BUKIL 2

AERONAUTICAL DATA TABULATION

Standard Instrument Departure Procedure Coding Tables

RNAV BUKIL 2 - GUKDO Transition

Serial Number	Path Descriptor	Waypoint Identifier	Fly-over	Course/Track °M(°T)	Distance (NM)	Turn direction	Altitude (ft)	Speed (kt)	Coordinates	VPA/TCH	Navigation specification	Remarks
001	CF	BUKIL	-	060(052.41)	8.0	-	-	-220	36°48'23.2"N 127°38'33.7"E	-	RNAV 1	CG 370 ft/NM to 6 000
002	TF	GUKDO	-	007(359.35)	12.78	-	+6 000	-	37°01'10.9"N 127°38'22.9"E	-	RNAV 1	CG 370 ft/NM to 6 000

RNAV BUKIL 2 - OLMEN Transition

Serial Number	Path Descriptor	Waypoint Identifier	Fly-over	Course/Track °M(°T)	Distance (NM)	Turn direction	Altitude (ft)	Speed (kt)	Coordinates	VPA/TCH	Navigation specification	Remarks
001	CF	BUKIL	-	060(052.41)	8.0	-	-	-220	36°48'23.2"N 127°38'33.7"E	-	RNAV 1	CG 370 ft/NM to 6 000
002	TF	TUTAE	-	330(322.50)	8.0	-	@6 000	-220	36°54'44.4"N 127°32'29.4"E	-	RNAV 1	CG 370 ft/NM to 6 000
003	TF	OWING	-	240(232.44)	18.0	-	@6 000	-	36°43'43.8"N 127°14'44.4"E	-	RNAV 1	-
004	TF	OLMEN	-	280(272.37)	12.29	-	+6 000	-	36°44'13.4"N 126°59'27.6"E	-	RNAV 1	-

RNAV BUKIL 2 - BULTI Transition

Serial Number	Path Descriptor	Waypoint Identifier	Fly-over	Course/Track °M(°T)	Distance (NM)	Turn direction	Altitude (ft)	Speed (kt)	Coordinates	VPA/TCH	Navigation specification	Remarks
001	CF	BUKIL	-	060(052.41)	8.0	-	-	-220	36°48'23.2"N 127°38'33.7"E	-	RNAV 1	CG 370 ft/NM to 6 000
002	TF	TUTAE	-	330(322.50)	8.0	-	@6 000	-220	36°54'44.4"N 127°32'29.4"E	-	RNAV 1	CG 370 ft/NM to 6 000
003	TF	OWING	-	240(232.44)	18.0	-	@6 000	-	36°43'43.8"N 127°14'44.4"E	-	RNAV 1	-
004	TF	BULTI	-	277(269.11)	20.3	-	+6 000	-	36°43'22.3"N 126°49'29.7"E	-	RNAV 1	-

Change : Amended coordinate format.

**STANDARD DEPARTURE CHART
INSTRUMENT (SID)**

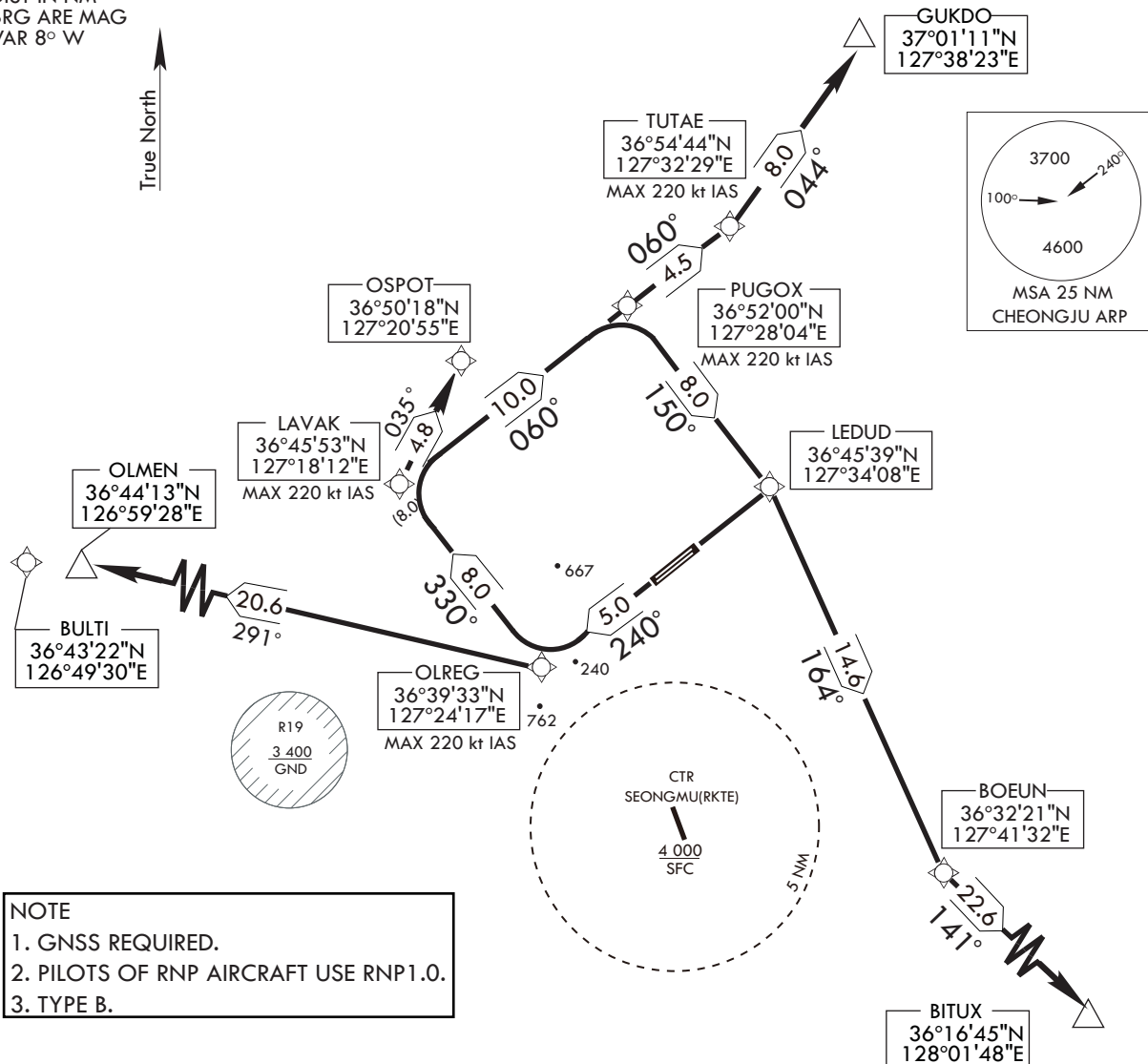
TRANSITION ALT 14 000
TRANSITION LVL FL 140

JUNGWON DEP 129.65 292.9
CHEONGJU TWR 118.7 249.6
126.2 236.6

**CHEONGJU/Cheongju INTL
RWY 24R
RNAV(GNSS)-OLREG 1**

Note : Departure under U.S. TERPS.

ELEV, ALT IN FEET
DIST IN NM
BRG ARE MAG
VAR 8° W



DEPARTURE PROCEDURE ROUTE DESCRIPTION

TAKE OFF MINIMA : RWY 24R- STANDARD WITH ATC CLIMB OF 310 ft/NM TO 8 000 ft.

TAKE OFF RWY 24R : CLIMB ON 240 DEG COURSE TO OLREG, THENCE.....

..... VIA(TRANSITION). MAINTAIN 6 000 ft, EXPECTED FILED ALTITUDE 5 MINUTES
AFTER DEPARTURE.

OLREG 1. GUKDO : 330 DEG TRACK TO LAVAK, THEN VIA 060 DEG TRACK TO TUTAE,
THEN VIA 044 DEG TRACK TO GUKDO.

OLREG 1. OSPOT : 330 DEG TRACK TO LAVAK, THEN VIA 035 DEG TRACK TO OSPOT.

OLREG 1. OLMEN/BULTI : 291 DEG TRACK TO OLMEN/BULTI,
CROSS OLMEN/BULTI AT OR ABOVE 8 000 ft.

OLREG 1. BITUX : 330 DEG TRACK TO LAVAK, THEN VIA 060 DEG TRACK TO
PUGOX, THEN VIA 150 DEG TRACK TO LEDUD, THEN VIA 164 DEG
TRACK TO BOEUN, THEN VIA 141 DEG TRACK TO BITUX.

Change : Information of procedure name(GAKRI 1 → OLREG) and fix names.

INTENTIONALLY

LEFT

BLANK

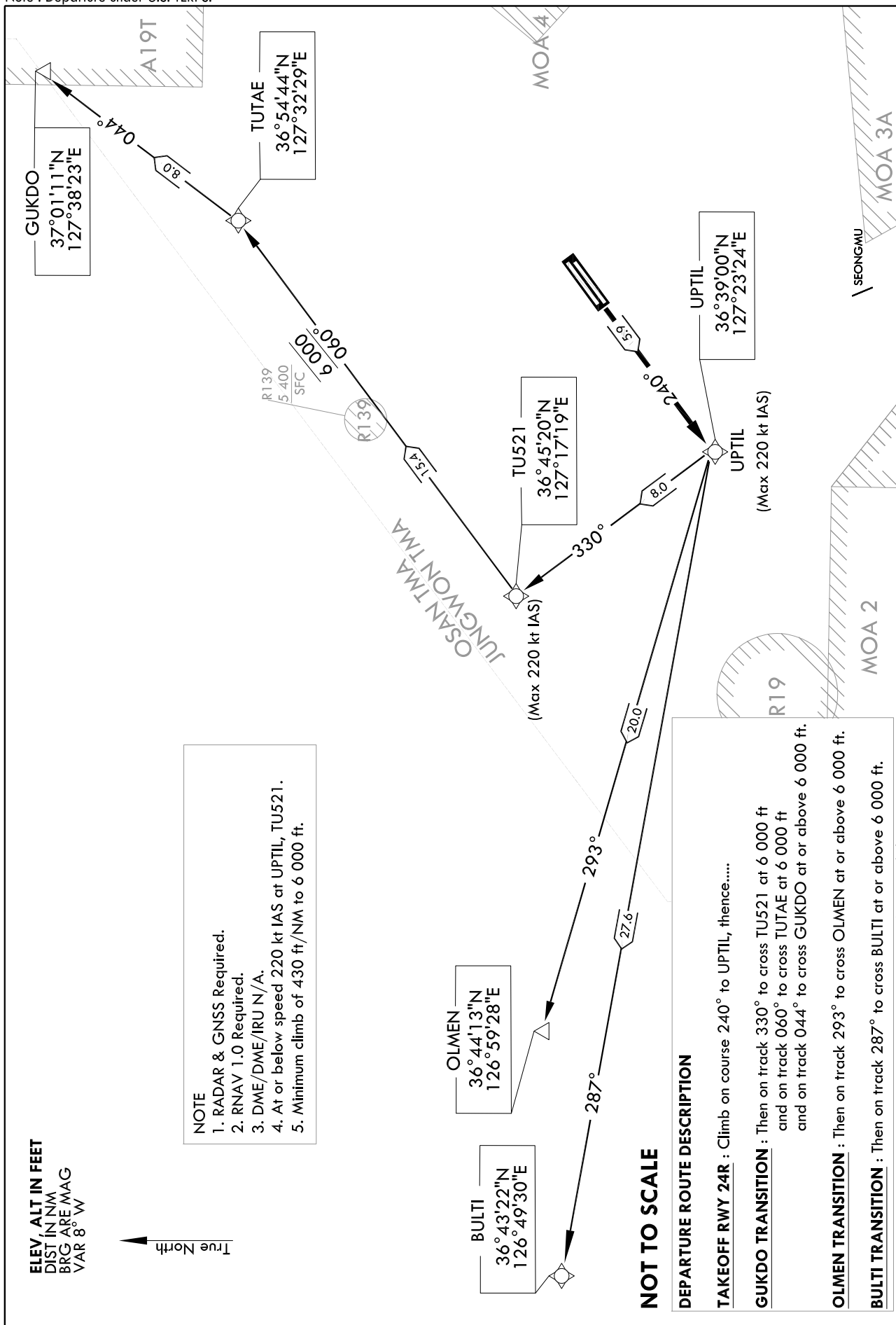
STANDARD DEPARTURE CHART
INSTRUMENT (SID) - ICAO

TRANSITION ALT 14 000
TRANSITION LVL FL 140

JUNGWON DEP 129.65
CHEONGJU TWR 118.7 126.2

CHEONGJU/Cheongju INTL
RWY 24R
RNAV(GNSS)-UPTIL 1

Note : Departure under U.S. TERPS.



Change : Information of procedure name and fix name(MANGO → UPTIL).

CHEONGJU/Cheongju INTL(RKTU)

RWY 24R

RNAV UPTIL 1

AERONAUTICAL DATA TABULATION

Standard Instrument Departure Procedure Coding Tables

RNAV UPTIL 1 - GUKDO Transition

Serial Number	Path Descriptor	Waypoint Identifier	Fly-over	Course/Track °M(°T)	Distance (NM)	Turn direction	Altitude (ft)	Speed (kt)	Coordinates	VPA/ TCH	Navigation specification	Remarks
001	CF	UPTIL	-	240(232.4)	5.9	-	-	-220	36°38'59.7"N 127°23'23.8"E	-	RNAV 1	CG 430 ft/NM to 6 000 ft
002	TF	TU521	-	330(322.34)	8.0	-	@6 000	-220	36°45'19.8"N 127°17'19.1"E	-	RNAV 1	CG 430 ft/NM to 6 000 ft
003	TF	TUTAE	-	060(052.27)	15.38	-	@6 000	-	36°54'44.4"N 127°32'29.4"E	-	RNAV 1	-
004	TF	GUKDO	-	044(036.24)	7.98	-	+6 000	-	37°01'10.9"N 127°38'22.9"E	-	RNAV 1	-

RNAV UPTIL 1 - OLMEN Transition

Serial Number	Path Descriptor	Waypoint Identifier	Fly-over	Course/Track °M(°T)	Distance (NM)	Turn direction	Altitude (ft)	Speed (kt)	Coordinates	VPA/ TCH	Navigation specification	Remarks
001	CF	UPTIL	-	240(232.4)	5.9	-	-	-220	36°38'59.7"N 127°23'23.8"E	-	RNAV 1	CG 430 ft/NM to 6 000 ft
002	TF	OLMEN	-	293(285.29)	19.95	-	+6 000	-	36°44'13.4"N 126°59'27.6"E	-	RNAV 1	CG 430 ft/NM to 6 000 ft

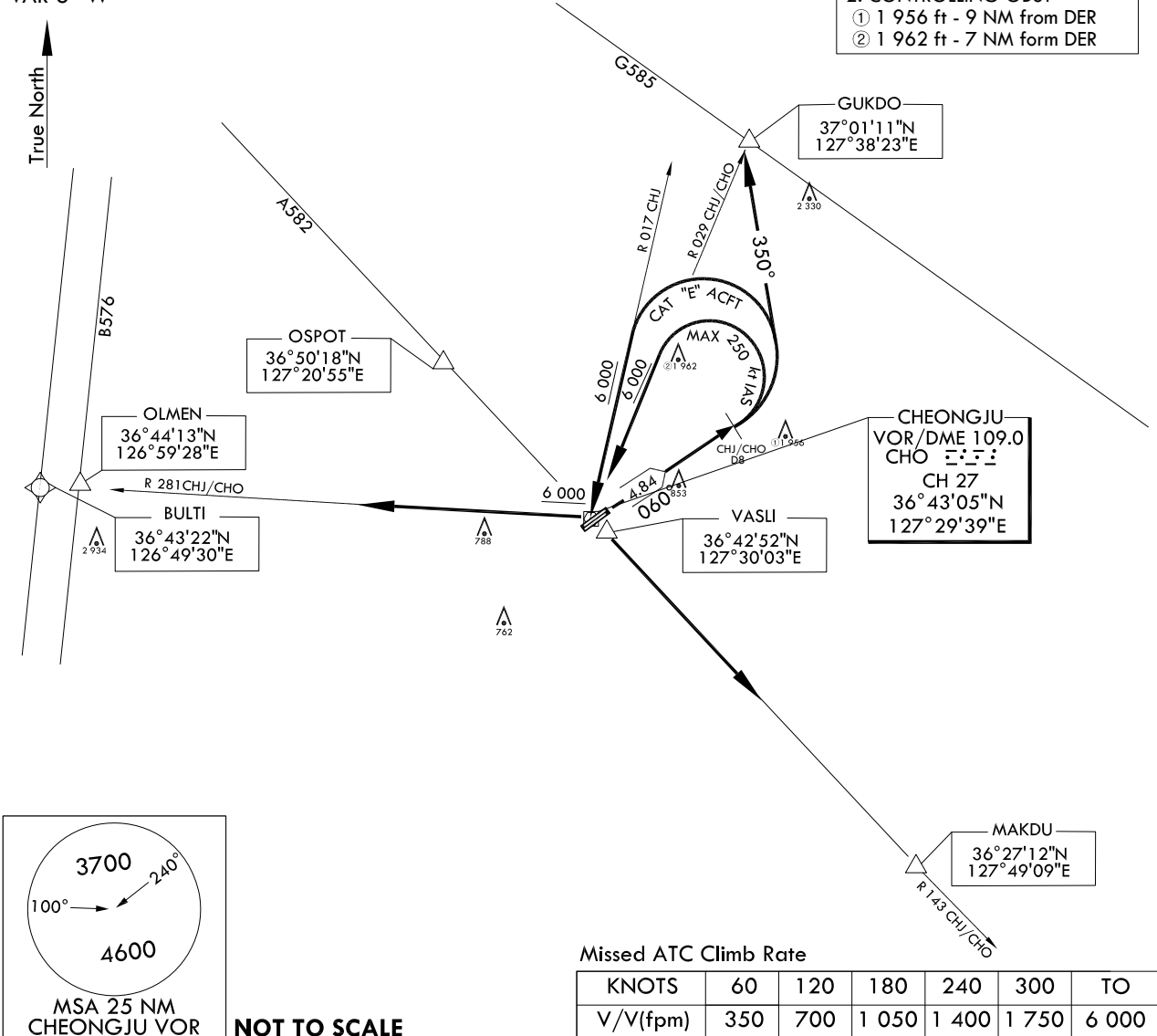
RNAV UPTIL 1 - BULTI Transition

Serial Number	Path Descriptor	Waypoint Identifier	Fly-over	Course/Track °M(°T)	Distance (NM)	Turn direction	Altitude (ft)	Speed (kt)	Coordinates	VPA/ TCH	Navigation specification	Remarks
001	CF	UPTIL	-	240(232.4)	5.9	-	-	-220	36°38'59.7"N 127°23'23.8"E	-	RNAV 1	CG 430 ft/NM to 6 000 ft
002	TF	BULTI	-	287(279.28)	27.62	-	+6 000	-	36°43'22.3"N 126°49'29.7"E	-	RNAV 1	CG 430 ft/NM to 6 000 ft

Change : Information of procedure name and fix name(MANGO → UPTIL).

STANDARD DEPARTURE CHART
INSTRUMENT (SID) - ICAOTRANSITION ALT 14 000
TRANSITION LVL FL 140JUNGWON DEP 129.65 239.4
CHEONGJU TWR 118.7 126.2CHEONGJU/Cheongju INTL(RKTU)
RWY 06L/R
CHEONGJU 7

Note : Departure under U.S TERPS.

ELEV, ALT IN FEET
DIST IN NM
BRG ARE MAG
VAR 8° W

DEPARTURE PROCEDURE DESCRIPTION

CHEONGJU 7 DEPARTURE

RWY 06L/R : Climb HDG 060° to CHJ/CHO 8 DME, then left turn thence.....

GUKDO transition

: Turn left HDG 350° for interception R 029 CHJ/CHO,
then track outbound R 029 CHJ/CHO to GUKDO maintain 8 000 ft
or assigned altitude by ATC.

MAKDU transition

: Turn left for interception R 017 CHJ/R 029 CHO to CHJ/CHO
and at or above 6 000 ft,
then track outbound R 143 CHJ/CHO to MAKDU maintain 8 000 ft
or assigned altitude by ATC.

OLMEN/BULTI transition

: Turn left for interception R 017 CHJ/R 029 CHO to CHJ/CHO
and at or above 6 000 ft,
then track outbound R 281 CHJ/CHO to OLMEN/BULTI
maintain 7 000 ft or assigned altitude by ATC.

Change : Withdrawal of TACAN(CHJ).

INTENTIONALLY

LEFT

BLANK

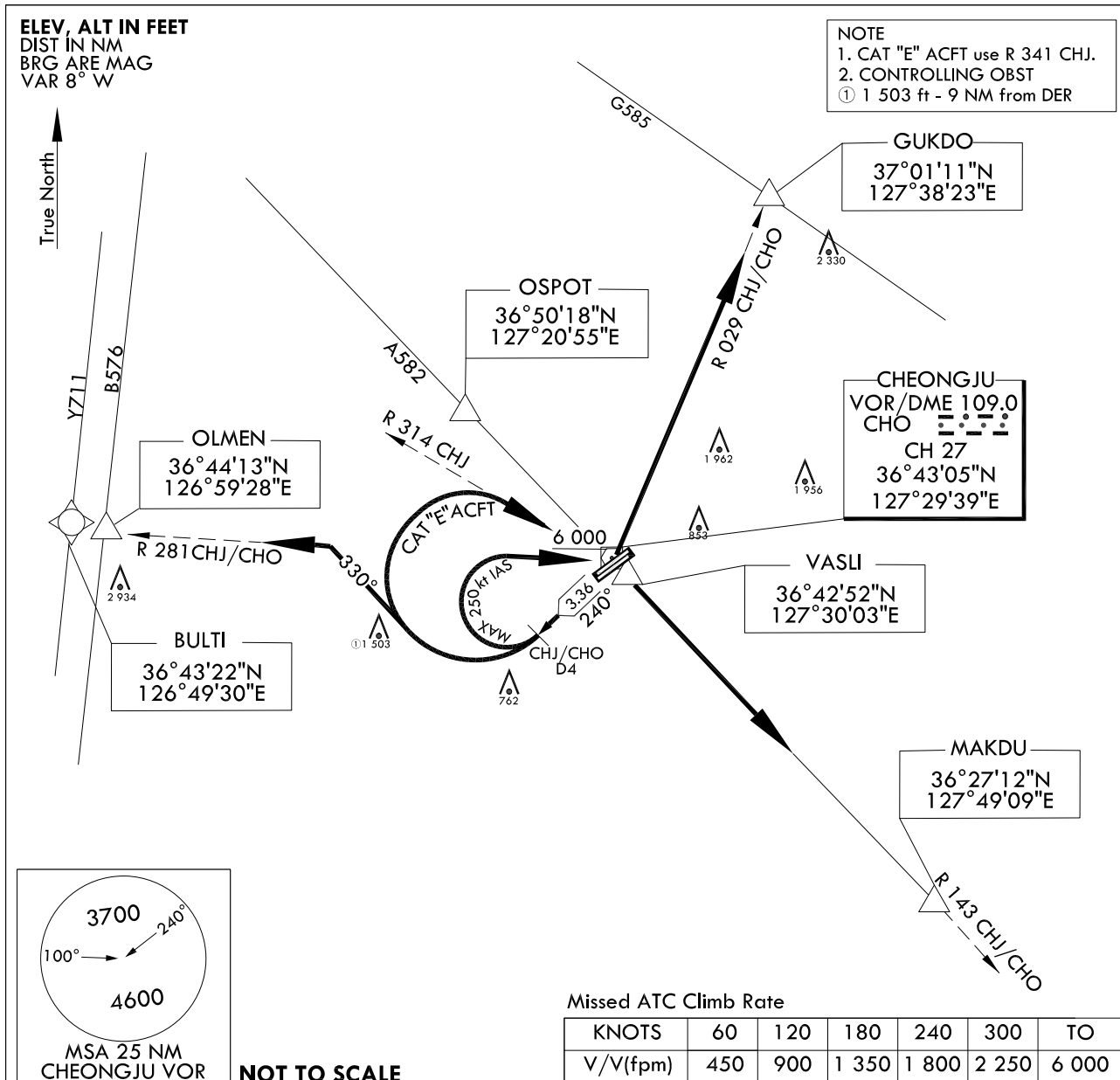
**STANDARD DEPARTURE CHART
INSTRUMENT (SID) - ICAO**

TRANSITION ALT 14 000
TRANSITION LVL FL 140

JUNGWON DEP 129.65 239.4
CHEONGJU TWR 118.7 126.2

**CHEONGJU/Cheongju INTL(RKTU)
RWY 24L/R
CHEONGJU 8**

Note : Departure under U.S TERPS.



DEPARTURE PROCEDURE DESCRIPTION

CHEONGJU 8 DEPARTURE

RWY 24L/R : Climb HDG 240° to CHJ/CHO 4 DME, then right turn for the following routes.

- GUKDO transition** : Turn right for interception R 341 CHJ/R 281 CHO to CHJ/CHO and at or above 6 000 ft, then track outbound R 029 CHJ/CHO to GUKDO maintain 8 000 ft or assigned altitude by ATC.
- MAKDU transition** : Turn right for interception R 314 CHJ/R 281 CHO to CHJ/CHO and at or above 6 000 ft, then track outbound R 143 CHJ/CHO to MAKDU maintain 8 000 ft or assigned altitude by ATC.
- OLMEN/BULTI transition** : Turn right HDG 330° for interception R 281 CHJ/CHO, then track outbound R 281 CHJ/CHO to OLMEN/BULTI maintain 8 000 ft or assigned altitude by ATC.

Change : Withdrawal of TACAN(CHJ).

INTENTIONALLY

LEFT

BLANK

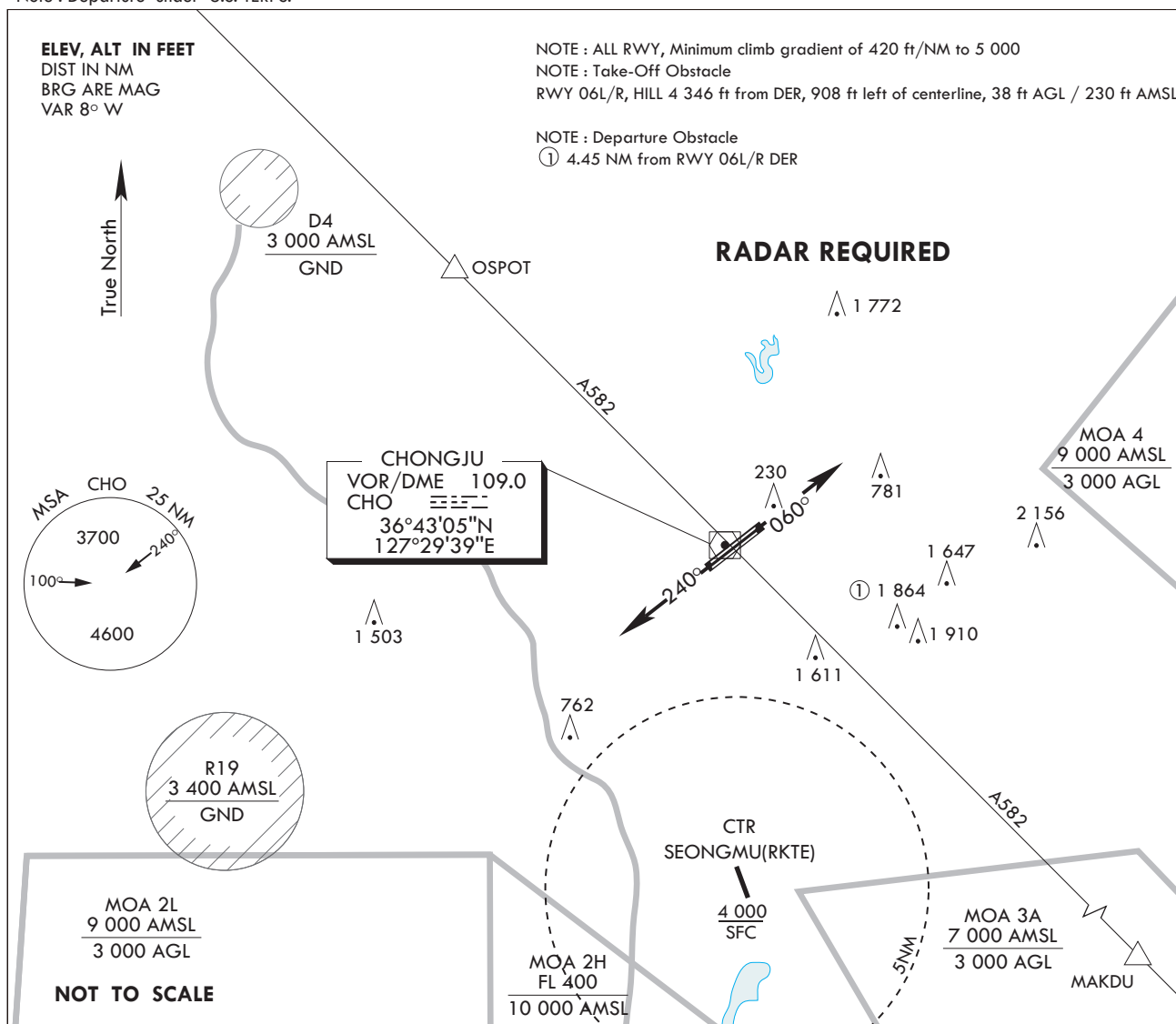
**STANDARD DEPARTURE CHART -
INSTRUMENT (SID)**

TRANSITION ALT 14 000
TRANSITION LVL FL 140

JUNGWON DEP 129.65 292.9
CHEONGJU TWR 118.7 249.6
126.2 236.6

CHEONGJU/Cheongju INTL
RWY 06L/24R
CHEONGJU 1D

Note : Departure under U.S. TERPS.



DEPARTURE PROCEDURE DESCRIPTION

NOTE : ALL RWY, Minimum climb gradient of 420 ft/NM to 5 000

TAKEOFF RWY 06R/L : Climb HDG 060°, Thence.....

TAKEOFF RWY 24R/L : Climb HDG 240°, Thence.....

.....Expect radar vectors to intercept filed Enroute fix or Navaid.
Maintain 6 000 or assigned altitude(flight level).
Expect filed altitude/flight level within 10minutes after departure.

LOST COMMUNICATIONS : If radio contact is not established with departure control
prior to reaching 5 000, Continue climbing and proceed filed route
and altitude.

Change : Amended coordinate format.

INTENTIONALLY

LEFT

BLANK